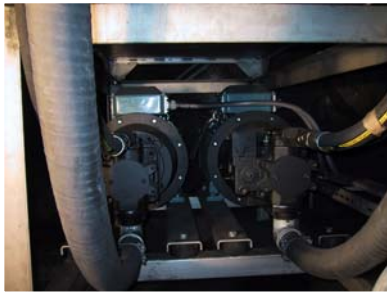


Reference sheet 305.05

Conveying equipment



Type of project:	Conveying of ilmenite powder
Scope of supply:	5 pcs.. SUH 350 screw conveyors.
Capacity:	200 t/psc., total 1000 t/h
Client:	Titania A/S, Norway
Year:	2002



Remarks

The Norwegian company, Titania A/S, needed a conveying system for transporting powdered ilmenite. The solution was 5 Cimbria Contec SUH 350 hydraulic driven screw conveyors and 5 pcs. hydraulic operating silo slide valves.

The SUH screw conveyors are heavy duty construction conveyors especially designed for conveying bulk material such as cement, lime, minerals or other

products with abrasive characteristics. Besides being manufactured in hard wearing steel such as Hardox plate, the conveyors are supplied with adjustable packing boxes and stand off bearings in the drive and tail end.

As the external environment of the conveying equipment is very aggressive, all metal parts are supplied in AISI 316L, just as all operation is hydraulic i.e. there are no electrical installations.